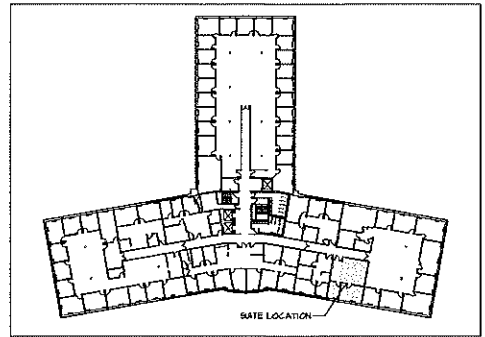


**A** SUITE 312 FLOOR PLAN



**1** THIRD FLOOR KEY PLAN

**GC GRAMMAS CONSULTANTS**  
 ARCHITECTS & ENGINEERS  
 300 ROUTE 104, SUITE 200, FARMINGDALE, NY 11735  
 TEL.: 631-343-6800 FAX: 631-343-6800  
 E-MAIL: NGDG & AOL.COM

REVISIONS		
NO.	DATE	REMARKS

REVISIONS		
NO.	DATE	REMARKS

THIS PLAN AND ALL INSTRUMENTS OF SERVICE ARE THE PROPERTY OF GRAMMAS CONSULTANTS AND WILL BE RETURNED TO THE FIRM UPON COMPLETION OF THE PROJECT. ANY INSTRUMENTS NOT RETURNED TO THE FIRM WILL BE CONSIDERED VOID. ANY INSTRUMENTS NOT RETURNED TO THE FIRM WILL BE CONSIDERED VOID.

PREPARED BY: LARRY FORBES  
 SUITE 312  
 425 BROADHOLLOW ROAD  
 MELVILLE, NEW YORK 11747  
 FOR  
**MELVILLE INDUSTRIAL ASSOCIATES**  
 445 BROADHOLLOW ROAD  
 MELVILLE, NEW YORK 11747

DATE: 12-13-10  
 SCALE: AS NOTED  
 DRAWN: B.J.A.  
 JOB NO.: 1049-S-2

THIRD FLOOR KEY PLAN, SUITE 312  
 FLOOR PLAN  
 DRAWING NO.  
**SK-1.0**